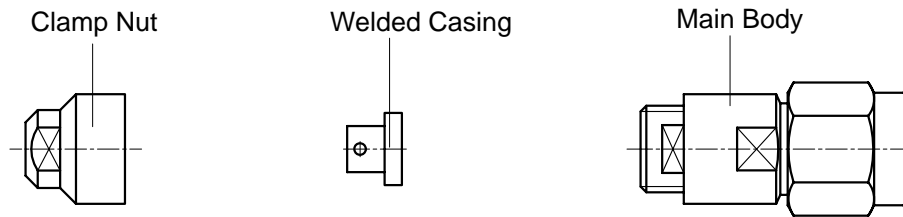


P/N: 96-03-2M11-038

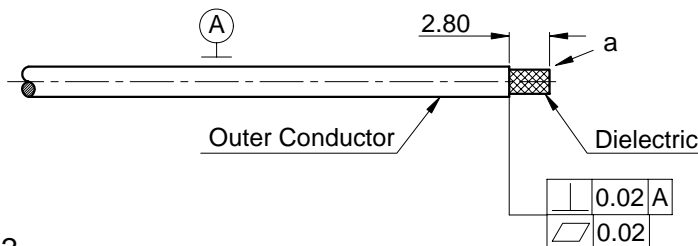
Description: 2.92mm Straight Male Solder for RG405/.086 Cable

**STEP 1**

a. Strip the cable's outer conductor according to the dimension as below.

Tips: 1. Do not nick the cable's dielectric;

2. The cut of the outer conductor must be very clean.

**STEP 2**

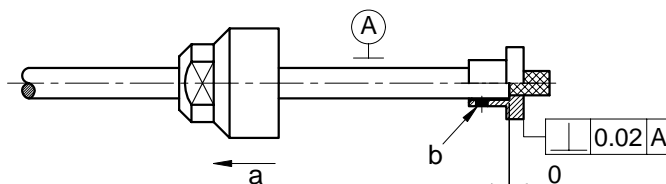
a. Slide the Clamp Nut onto the cable.

b. Slide the Welded Casing onto the cable and solder it onto the cable.

Tips: 1. When solder the Welded Casing must use special jig to ensure the perpendicularity.

2. There is zero gap between cable's outer conductor and Welded Casing's inside step as below.

3. The soldering time must be short, can't overheat the cable, otherwise the dielectric will expand then the cable's electrical performance will changed.

**STEP 3**

a. After the cable is cooled down to room temperature, trim the dielectric as below.

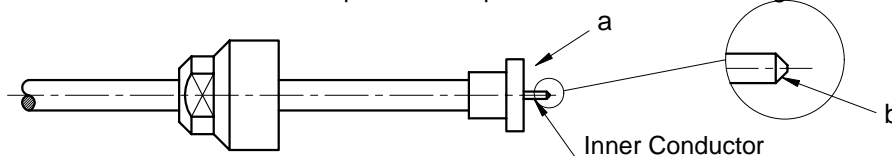
b. Sharp the inner conductor's edge as below.

Tips: 1. Trim the dielectric along the Welded Casing, the cut must very clean.

2. When trim the dielectric do not nick the inner conductor.

3. Do not bend the inner conductor.

4. Clean all the metal chips after sharp the inner conductor's edge.

**STEP 4**

a. Inert the inner conductor into the center contact (in the Main Body) carefully.

b. Screw the Clamp Nut into the Main Body with wrench (Recommended torque 7~9 in-lbs).

